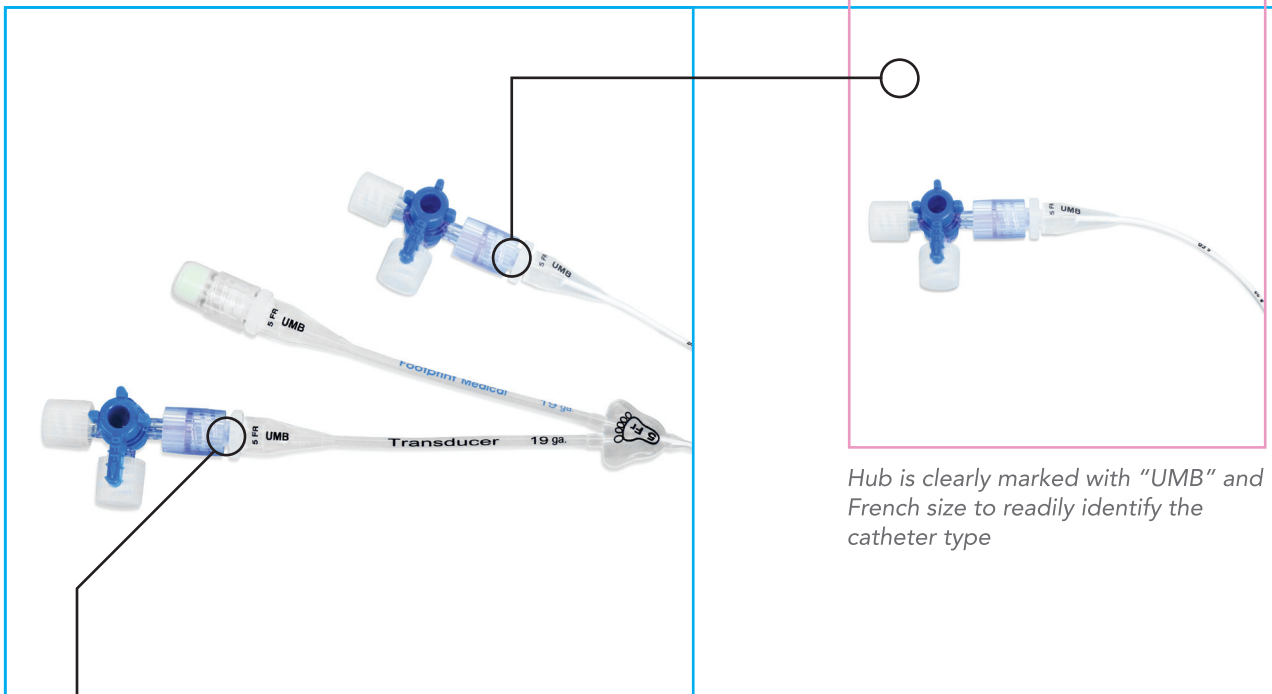
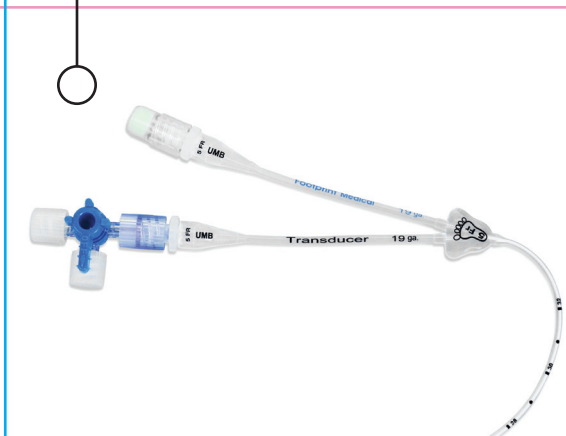


Umbilical Catheters



Hub is clearly marked with "UMB" and French size to readily identify the catheter type

Dual lumen hubs are color coded and clearly labeled for size and transducer use



Umbilical Catheters

- Clear, indelible markings allow for accurate placement, line identification, and assessment.
- Made of soft, biocompatible medical grade silicone
- Bold indelible markings every centimeter
- Latex free. No DEHP or other plasticizers
- Radiopaque stripe for confirmation of tip placement by x-ray
- Smooth tip surface designed to reduce thrombogenicity



Ordering Information for:
Umbilical Catheters



Silicone Umbilical Catheters

S1UVC-3540	Silicone Umbilical Catheter (Single Lumen)	3.5 Fr.	5/cs
S1UVC-540	Silicone Umbilical Catheter (Single Lumen)	5.0 Fr.	5/cs
S1UVC-6540	Silicone Umbilical Catheter (Single Lumen)	6.5 Fr.	5/cs

S2UVC-436	Silicone Umbilical Catheter (Dual Lumen)	4.0 Fr.	5/cs
S2UVC-536	Silicone Umbilical Catheter (Dual Lumen)	5.0 Fr.	5/cs

"Helping tiny babies make their own footprints in the world..."

Distributed By:



1203 Camden
San Antonio, Texas 78215
210.226.2600
www.footprintmed.com